



June 2023

Volume 1, Issue 1

### Inside this issue:

<b>Collins Corridor Project</b>	<b>2</b>
<b>Algae in Bethany Tidal Waters</b>	<b>3</b>
<b>A Boring Story</b>	<b>4</b>
<b>Comprehensive Plan Update</b>	<b>5</b>
<b>W.A.V.E. Campaign</b>	<b>6</b>
<b>Seaside Concert Series</b>	<b>7</b>
<b>Bethany Beach Loop Canal</b>	<b>10</b>

### Special points of interest:

- **Beach Replenishment Schedule**
- **Collins Corridor Project**
- **Introducing the W.A.V.E. Campaign**
- **Seaside Concert Series**
- **Bethany Beach Loop Canal Update**

# Town of Bethany Beach Newsletter



Photo by Jenn Carter

## *From the Mayor's Office*

In response to a number of requests, I'm happy to announce that the Town will once again publish a newsletter. Although the Town's website provides a great deal of information, and notices regarding meetings and other timely information are sent to those who have signed up for listserv, we have been reminded by citizens that they miss an ongoing, regular Town publication to keep them up to date on Town issues and what the Town is doing. This is the first newsletter, and we hope that you find that the information meets the needs of our community, property owners, residents and businesses. We welcome your feedback and suggestions.

Thank you,  
Rosemary Hardiman

## *Beach Replenishment Scheduled*

In June of 2023 the U.S. Army Corps of Engineers will begin a project that will replenish the beach and dune in Bethany Beach between Third Street and Wellington Parkway. It is estimated, depending on weather, replenishment will take between 15 to 25 days and will place an additional 320,000 cubic yards of sand on our dune and beach.

Beach and dune replenishment is part of the Army Corp of Engineers Storm Damage Reduction Project and is funded by monies from both the Federal (65%) and Delaware State Government (35%). Total estimated annual project cost for the beach fill and the dune sys-

tem is 3.624 million dollars over the project's 50-year life. This cost estimate includes initial construction costs, periodic nourishment, major rehabilitation, and project monitoring.

This 2023 replenishment project, which also includes Rehoboth Beach, Dewey Beach, South Bethany and Fenwick Island, costs in excess of 24 million dollars.

Piping for delivering sand to the beach will come ashore between Campbell Place and Central Avenue. Construction will move north from Campbell Place initially. When work is completed in the

northern sector of the project area, construction will move south. To ensure safety, 1000' sections of the beach will be closed during construction. Crossovers will be built and fencing installed after beach replenishment is complete. Dune grass will be planted in the fall. [Beach Replenishment Video.](#)





## ***Collins Corridor Project***

The Collins Corridor Project will enhance pedestrian safety on Collins Street between Halfmoon Drive and Kent Avenue, on Kent Avenue between Collins Street and Wellington Parkway, and on Wellington Parkway between Kent Avenue and Delaware Route 1. This expanded project was unanimously approved by the Town Council at its January 2023 Meeting. A smaller project on Collins Street was previously unanimously approved by the Town Council in February 2019.

Documents are being prepared and the project will

soon be offered for bid. It is estimated the Town will select a contractor and sign a contract for the project by late July or early August, with construction to begin in the fall.

Discussion regarding the Collins Corridor Project included a few homeowners requesting some relief to standing water issues at the rear of their properties. These problems have plagued this area for decades because of swales dug behind homes by the developer or individual homeowners, with no overarching plan ever created to move stormwater to a “collector” swale.

The Town has examined this problem a number of times previously and determined that the creation of an effective swale behind Collins Street homes would result in the removal of a significant number of trees at the rear of many properties. However, the Town is revisiting this problem once more and has asked our engineer to present recommendation(s) on a possible solution to the water retention issue. That work is underway.



**Rendering of Collins Street and Kent Avenue portions**



## *Algae in Bethany Tidal Waters*

This year the Town saw an algae bloom develop rapidly in the Loop Canal and Lake Bethany because of the heavy rains in early spring.

Those rains washed an incredible amount of pollen from our heavy tree cover (and chemicals from lawn treatment) into the Loop Canal in a very short period of time. That quickly initiated an above average early season algae bloom in our tidal waters.

Intrinsically, algae is not a bad thing to see in tidal waters and serves as an important source of food for protozoans, insects and fish and is a vital component of the inland bays tidal ecosystem. However, like many things, too much of a good thing is often problematic.

As mentioned, rainwater brings with it chemicals from lawns and farms and those chemicals

(nitrogen and phosphorus) encourage rapid algae bloom. Most of Bethany Beach drains into the Loop Canal, but unfortunately rainy days in Bethany aren't the only source of chemicals in the Canal, they are pushed into the Canal twice a day with tidal waters from the Indian River Bay. And, the Indian River Bay continually registers high levels of nitrogen and phosphorus from lawns and farms throughout the region. While the Town actively promotes best practices for the use of chemicals in lawn care, it is hard for Bethany Beach to singlehandedly correct a problem that plagues the entire County.

Because an excess of algae and associated bacteria can become toxic, the Town actively monitors the health of tidal waters within our community. For over two decades the Town has

retained a company (Envirotech) whose specialty is environmental biology. This company monitors and evaluates many environmentally sensitive areas throughout Bethany Beach and constantly interacts with our staff on the health and maintenance of those areas. We believe we are steps ahead of many in caring for the environmentally sensitive areas of our community, just as we lead the region in acquiring and preserving tidal wetlands.

Because of the early algae bloom, the Town asked our environmental engineer for his assessment of the Loop Canal.

### [Envirotech Report](#)

Since the assessment in mid-May, most of the algae has already decomposed naturally.



## *A Boring Story*

The Town has recently completed a comprehensive analysis of what lies below the surface of Bethany Beach! The Town has collected a great deal of information over the years regarding flooding and stormwater management and continually looks to add information to that database to give us a better understanding of flooding in our community, and how we may better control that flooding.

Recently, the Town contracted with the engineering firm of John D Hynes, Inc., a geotechnical and environmental consulting firm, to conduct an analysis of soils throughout the Town. To conduct that study the firm

selected 40 separate boring sites throughout Bethany Beach and took bore samples to a depth of eight feet. The samples were analyzed and the Town was provided with a report of that analysis.

The report analyzes soils in two-foot increments. The link to the locations of the 40 bore sights and the soil analysis of those locations can be found at the end of this article.

The soil/boring study provides a good grounding of the very basics of conditions related to storm water and flooding in Bethany Beach.

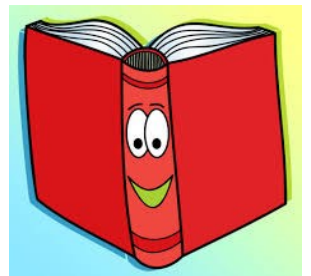
If our ditches stay full, if our swales sit with water in them, and if the puddles on our streets stay

full more than we would like after every rain and stormwater event, there may be a reason for that. Hynes analysis tells us that there is nowhere in Bethany Beach that the soil immediately beneath our feet is not considered "wet" within the first 24 inches and saturated at 38 inches!



[Boring Location Link](#)

[Boring Report Link](#)



## *Nature Center & Conservation Area*

Housed in one of the Town's original cottages, the Addy Cottage circa 1903, the [Bethany Beach Nature Center](#) has lots of fun and exciting things for the whole family to discover and explore both inside and outside.

### **Looking for a place to walk your dog?**

Walk over the wetlands on our boardwalked Baldwin Nature Trail. Good exercise for you and your pet!

### **Looking for a nature inspired drop-in activity to do with your family and children during the week?**

You can find it right here inside the cottage at our Nature Adventure Table!

### **Looking for a fun family Saturday morning activity?**

Try out our Kidz Nature Adventure Saturday-starts at 10:30 am rain or shine!

### **Looking for info on Native Plants in our area?**

Take a walk in our Native Plant Demonstration Garden and see for yourself what you could be doing in your own garden.

### **Looking for info on rain gardens and rain barrels?**

We have one of each that you are welcome to check out so you can learn how to set one up for yourself



---

## ***Comprehensive Development Plan Update***

### **What is a Comprehensive Development Plan?**

Delaware requires its 57 municipalities and three counties to prepare a Comprehensive Development Plan. The purpose is to encourage the most appropriate uses of the physical and fiscal resources of the municipality. In addition, the process and plan serve to ensure that municipal growth, development and infrastructure investment actions are coordinated and consistent with those of other municipalities, counties and the State. A Plan must be updated every ten years and reviewed every five years. Annual reports regarding implementation must be submitted to the Office of State Planning Coordination.

### **What information must a Comprehensive Development Plan contain?**

Delaware law requires that every plan address goals and recommendations regarding: Community Vision; Community Character, Design and Sense of Community; Government and Community Services and Infrastructure; Housing; Transportation; Economic Development and Redevelopment; Natural Resources and Sustainability; Parks, Recreation and Open Space; and Future Land Use. The Plan guides municipal zoning ordinances, subdivision and land development regulations, annexation policy and procedure and capital improvement projects, among other areas.

### **Who is responsible for the development and approval of a Plan?**

Comprehensive Plans are prepared and updated under the direction of the Town's Planning and Zoning Commission, adopted by Ordinance of the Town Council after a public hearing and certified by the State of Delaware following extensive review by each of the responsible State agencies.

### **What is the progress to date on the Town's 2022-2023 Comprehensive Plan?**

The Town's Planning and Zoning Commission began work on the proposed plan in January 2021. They reviewed every Chapter of the 2012-2022 plan and discussed it at 19 meetings where public comment and input was sought. There was also regular input and participation from Council members during these meetings. This type of collaboration has been invaluable and the process has enabled the Commission to work closely with the Council and citizenry. Following completion of the Commission's review, they contracted with the University of Delaware, Biden School of Public Policy, Institute of Public Administration (IPA) to assist with updating maps, charts, formatting and to ensure that the document met State guidelines for communities our size (under 2000). The IPA is highly regarded throughout the State for their expertise in preparing Comprehensive Plans. The IPA worked with a subset of the Commission and Council to complete the Plan.

The Town Council met four times to review the Plan (November and December 2022 and February and March 2023) where public comment and input was sought. On May 26, 2023, the Council and Commission met and conducted a joint Public Hearing in which input from the public was sought and provided. On June 12, the Council will hold a public workshop at 10 am to review any input it wishes to add. At the regularly scheduled Council meeting on June 16, 2023, Council will vote on whether to submit the Comprehensive Plan for review by applicable State agencies (called Preliminary Land Use Service or PLUS review). The Comprehensive Plan Document in Draft form can be found [here](#).



## **Bicycle & Pedestrian Safety Committee launches W.A.V.E. Campaign**



In a continuing effort to promote bicycle and pedestrian safety, the Town of Bethany Beach announces a new public awareness campaign called W.A.V.E for Safety in Bethany Beach.

W.A.V.E. stands for Wait/Watch, Assess, Verify, and Engage/Enter when considering traffic patterns and cross walks.

A series of videos was produced to better illustrate the initiative. These videos can be seen on the Town's YouTube channel: [@BethanyBeachGov](https://www.youtube.com/@BethanyBeachGov).

According to Federal NHTSA studies and the State's Office of Highway Safety, Delaware has one of the highest per-capita pedestrian fatality rates in the nation. Approximately 24% of all traffic fatalities involve pedestrians. To address this, the Town established a Bicycle and Pedestrian Safety Committee which was instrumental in bringing the concept to fruition.

The W.A.V.E. campaign is just one more way the Town works to provide a safe environment for its residents and visitors.

In the summer, the Bethany Beach Police Department regularly conducts safety check points to install bike lights and distribute informational flyers. The full-time officers work overtime running patrols geared towards bicycle and pedestrian safety and public awareness.

In 2022, the Town installed crosswalk notification posts at all high-volume pedestrian areas along Coastal Highway. To view the video and subscribe to the Town's channel visit [YouTube.com/BethanyBeachGov](https://www.youtube.com/BethanyBeachGov).

## **Bethany Beach Trolley is Free to Ride**



Trolleys run from the Friday before Memorial Day through mid-September, continuously between 9:30 am to 10:00 pm. (Note: Last pick up on Atlantic and Garfield is at 9:45 pm) The trolley leaves location #1 on the half hour

starting at 9:30 am. There may be little or no service daily 12:30 p.m. to 1:00 p.m. and 7:00 p.m. to 7:30 p.m. (approximate times) due to a lunch break.

You can flag down the trolley anywhere along

the route for pick-up or discharge, except on Route 26 and Route 1. No pick-up or drop-off on Jefferson Bridge or Route 26. [Click here for Trolley Schedule.](#)



## **Dinker-Irvin Museum Hours**

The [Bethany Beach Museum](#) at Dinker-Irvin Cottage officially opened its doors to the public on Saturday, April 30<sup>th</sup>, 2022, and remained open year-round. Since its opening, the museum has steadily gained interest and hosted hundreds of visitors including the great grand-

daughter of William Dinker. From May 1<sup>st</sup> through October 30<sup>th</sup>, the Museum will be open three days a week on Mondays, Wednesdays, and Fridays from 10:00 a.m. to noon. Docents will be on hand to answer questions. Admission is free and parking is available in front of

the museum. The museum, located at 318 Garfield Parkway, offers an immersive experience of an historically significant early 1900 era home and a glimpse of what life was like during the early days of the town.

## *Seaside Concert Series*

The Town of Bethany Beach invites you to take advantage of all the fun, and free entertainment this resort town has to offer!

Bandstand performances take place on Thursday nights in the summer and Saturday and Sunday nights in September and October. Summer Wednesdays will feature "Kids Nights" in July and the occasional rain date.

Summer concerts typically begin at 7:30 p.m.

Fall concerts will begin at

6:30 p.m. Shows offer something for everyone - from rock and pop to country, jazz, and anything in between.

Bench seating is provided free of charge, but it is limited. Since seating is first-come first-served, we ask that you don't save full benches in the hours leading up to show times. We encourage audience members to bring their own chairs.

In addition to our Seaside Concert Series, we will also host movies and bonfires on the beach.

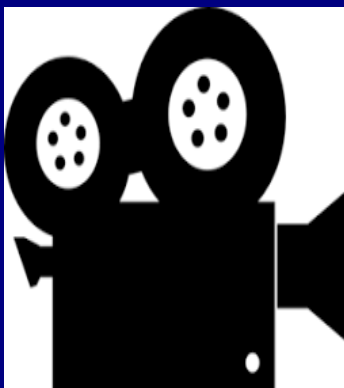


## *Watch Bandstand Performances at Home*

Watch bandstand performances this summer from the comfort of your home. We're getting close to the 1000 subscribers we need to be able to broadcast our bandstand performances via YouTube for those who want to enjoy them at home. As of today, we

have 934 subscribers. If you haven't signed up, please do so today so that we can begin broadcasting this season. Go to the Town website at [www.townofbethanybeach.com](http://www.townofbethanybeach.com) click on the red arrow in the upper right-hand corner and sign up.

There is no obligation to watch the performances, although with the great lineup this season, you won't want to miss any. And please, encourage your family and friends to sign up as well.



**Keep updated by registering and watching Town Videos on the Town's YouTube channel, BethanyBeachGov**

## *Bethany Beach Police Department Update*



The Bethany Beach PD has been proactively promoting the safety of pedestrians and bicyclists for many years. During the busy summer months, the Town will be out in full force, educating the public on awareness and safety concerns.

In conjunction with the Town Bicycle and Pedestrian Safety Committee (B&P Safety Committee), the Bethany Beach Police Department will have safety checkpoints, roaming patrols and educational booths informing the public on laws, strategies, and fundamentals to use to get to your destination safely.

Starting on Memorial Day Weekend, the Police Department will set up a tent promoting the B&P Safety Committee's slogan "WAVE for Safety." WAVE stands for Wait and Watch, Assess the Traffic Patterns, Verify it's safe to cross and Engage/Enter the crosswalk. This campaign has created promotional videos on the fundamentals of abiding by state traffic codes, as a pedestrian and cyclist. These videos will be aired before each Movie on the Beach event. Pamphlets have also been cre-

ated for use in the safety campaign.

You should be able to find these pamphlets at any safety checkpoint or educational tent where the PD and Committee members may be located. In addition to these information sessions, the B&P Safety Committee will be located at heavily populated pedestrian intersections throughout the busy summer months.

These casual encounters with citizens/volunteers like yourself, who share the same mindset of safely traveling from point A to B, will help the Town in promoting a unified objective shared between the Town and our residents.

The Bethany Beach PD plans to host 2 Bicycle Safety Checkpoints, in conjunction with the Office of Highway Safety, where we provide knowledge, education and awareness to those that travel on our roadways. The Police Department, as well as the B&P Safety Committee, will be on hand to install the required safety lighting for your bicycles. These

dates are slated for Thursday, July 27<sup>th</sup> 8:00 AM to 11:00 and Thursday, August 10<sup>th</sup> 8:00 AM to 11:00. Both checkpoints will be held at the intersection of S Pennsylvania Ave and Wellington Pkwy.

On Tuesday, June 27<sup>th</sup>, The Bethany Beach PD, and the B&P Safety Committee plan on attending a J1 Student Picnic, hosted by St. Martha's Church (Maplewood St.). This event will be a casual atmosphere that will engage our foreign student population with the Town. Most importantly, it will provide them with the required bike lighting, education and awareness seeing they routinely travel the roadways via bicycle or foot.

We look forward to seeing you out on our roadways. As always, be visible, plan accordingly, and don't forget to [WAVE!](#)



## **Free Beachfront Parking is Limited**

Summer is fast approaching and free beachfront parking is limited. As you may recall, prior to the pandemic, residential permits could only be used to park free on the east-west streets. Because the Town was required by the Governor to try to limit the number of people on the beach to provide for social distancing, in 2020 the Town allowed for free parking in the beachfront lots with a residential permit. This was so well-received that we continued it during the summers of 2021 and 2022.

However, last year our summer expenses soared, especially with the increasing cost in hiring seasonal employees for the beach patrol, police, public works and code enforcement. At the same time, revenue from parking fees fell, primarily because of the number of people who were parking in the beachfront lots using residential permits. Parking fees and rental taxes are the two largest sources of revenue used to cover summer expenses. Last year, summer expenses exceeded summer revenue by approximately \$201,000 primarily due to lost parking revenue.

Because we want to continue to allow parking in beachfront lots with a residential parking permit, we have found it necessary to provide only one, rather than two, beach-front residential parking permits this season. For this reason, they are different colors.

The BLUE permit, which was sent free to every property owner, is the permit that allows you to park for FREE in beachfront lots. If you purchase a second permit which is yellow, you will NOT be able to use that permit to park free in those lots. If you park in beachfront lots using the yellow permit, you will be ticketed, so please be sure to use the correct colored permit.

This is our Town and together we can make this work. Thank you for your understanding and cooperation.



## **Town Working to Add Parking Spaces Downtown**

Pay to park parking spaces, and the revenue they generate, are a critical component of the Town's fiscal well-being.

Pay-to-park spaces generate \$2,456,952 and is the largest seasonal revenue source the Town has to help pay \$5,451,854 in annual summer expense! The Town works to maintain a base of 1000 pay to park parking spaces but fights a constant battle to maintain that number. Streetscape, bike racks, scooter spaces, new home construction and a host of other considerations all combine to make that number closer to 900.

Because of that, and to make sure we can provide adequate parking for downtown businesses so they can thrive, the Town is working with the Christian Church Conference Center to explore the possibility of using the southwest corner of the Conference Center's property for a municipal parking lot. A municipal parking lot at this location would accommodate 75+ cars!

Church officials are considering the Town's offer to enter a revenue sharing arrangement to develop the lot and the Town is optimistic that the property may be available for public parking before the summer is over.

**Parking Picture Link**

## **Preservation of the Lake Bethany/Loop Canal Land Strip**

We have had many inquiries over the last year and a half about what we are doing to preserve a land strip located between Lake Bethany and The Loop Canal. This parcel is undeveloped and home to a heron rookery. The Town recently partnered with McCormick and Taylor Engineers to determine a path forward.

Preservation of the land strip involves stabilizing the lake and canal banks that are eroding and impacting mature trees and contributing sediment into the lake and canal. Two solutions are proposed – bulkhead for the canal side of the land strip and a living shoreline for the lakeside of the land strip.

### **The Bulkhead**

The proposed solution for the canal side of the land strip is 850 linear feet of timber bulkhead to stabilize the 3–7-foot vertical eroding bank. The bulkhead is consistent with the surrounding area, and we believe it will have the least impact on the surrounding area. This will protect mature loblolly pines which provide nesting habitat for great blue herons while it reduces erosion that is contributing to sediment accumulation in the canal.

The proposed bulkhead will protect the heron rookery and reduce erosion. Encroachment of alternate stabilization practices into the canal may create safety concerns with recreational users and would most likely disturb the heron rookery.

The work will occur on the parcels owned by the Town of Bethany Beach and will occur from a barge serving as the work platform. The pile driver will be the primary equipment for building the timber bulkhead. Building the timber bulkhead from the water and mobilizing equipment from a barge reduces impacts to the adjacent tidal wetlands and the peninsula's important trees.

These recent photos from February 2023 demonstrate the ongoing erosion and remanent tree stumps where the previous shoreline existed. The shoreline has retreated several feet over the years and the erosion continues to contribute hundreds of yards of sediment into the canal. *(Continued on next page).*





## ***Preservation of the Lake Bethany/Loop Canal Land Strip*** *(Continued)*

### **The Living Shoreline**

The living shoreline is being proposed along the Lake Bethany side of the land strip with the existing shoreline height ranging between 1-2 feet and shown in the photographs. The shoreline is currently naturalized in some areas with native vegetation while other areas are actively eroding, which threatens the long-term resiliency of the peninsula's interior shoreline.

The proposed design includes extending a low marsh along the shoreline by establishing an edge treatment of dual 18-inch coir logs stacked and anchored offset with oyster bags along the toe or bottom of the coir logs providing footer anchoring and aquatic habitat. The coir log and oyster bag alignment is designed to integrate with existing trees and habitat features of already fallen or in place trees and vegetation. The design incorporates these natural features for habitat and existing shoreline protection.

### **Funding and Next Steps**

The project is estimated to cost approximately \$1.1 million. With

Senator Hocker and Representative Gray's support, the Town received planning assistance from State of Delaware Community Reinvestment Funding for \$102,841.

The Town has sought Congressional funding for the bulkhead and the living shoreline. We were recently notified by Representative Blunt-Rochester's office that the land strip preservation project has been selected to be submitted to the Appropriations Committee. This does not guarantee funding, but it puts us in line to get funding in 2024.

On May 18, 2023, the Town, along with our engineers, McCormick and Taylor, attended a preliminary joint permitting review with the United States Army Corp of Engineers ([USACE](#)) and Delaware Department of Natural Resources ([DNREC](#)). At this meeting our plans for the bulkhead portion of the project were reviewed. You can view the presentation [here](#).

We are now in the process of addressing their comments and drafting final plans.



**February 2023**

# Town of Bethany Beach

214 Garfield Parkway  
P.O. Box 109  
Bethany Beach, DE 19930

Phone: 302-539-8011

Fax: 302-539-8149

Email: [Newsletter@townofbethanybeach.com](mailto:Newsletter@townofbethanybeach.com)

Please send us your comments, questions or  
concerns



We are on the web.

[www.townofbethanybeach.com](http://www.townofbethanybeach.com)

Town of Bethany Beach  
The Quiet Resort

## *Beach Rules*

- No tents, canopies, tarps, or cabanas. Standard upright umbrellas and baby tents (no larger than three (3') feet high by four (4') feet wide by five (5') feet long and without grounding wires or ropes that extend beyond the perimeter of the device) are allowed
- No smoking or vaping unless in a designated smoking area
- No ball playing, tossing objects, kites, or fishing during lifeguard hours
- No alcoholic beverages or glass containers
- No boats or vehicles on beach
- No dogs May 15 through September 30
- No fires
- No littering
- Beach closed to public from 1:00 am to 5:00 am daily
- No sleeping on beach from 10:00 pm to 8:00 am
- No digging large holes in sand

