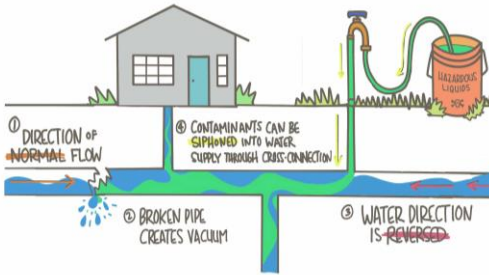


---

## What is a cross connection and backflow?

---

- **Cross Connection** – an actual or potential link between the town's drinking water system and a non-potable (non-drinkable) source
- **Backflow** – the reversing of normal water flow direction



**Normally, potable water flows under pressure into your home. A sudden drop in water pressure creates the potential for non-potable water to flow backwards into the Town's water main.**

**\*\*Consuming or using contaminated water can create a potential for waterborne diseases and other serious health risks.**



For more information or to report suspected cross connections, contact:

The Town of Bethany Beach Water Department

214 Garfield Parkway Bethany Beach, DE 19930

302-537-2625

*Have a beautiful Bethany Beach day!*

# DRINKING WATER PROTECTION



---

## Cross Connection Control Education

**How you can help protect our drinking water**

---



## What are the most common cross-connections?

---

- Wash basins and hose bibs
- Irrigation or lawn sprinkler systems
- Swimming pools or spas
- Solar heat systems
- Fire sprinkler systems
- Auxiliary water supplies (wells, storage tanks and second feeds)
- Food and beverage processing equipment
- Ornamental fountains



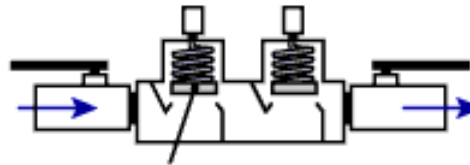
You can help prevent cross-connections.

## Examples of backflow prevention

---

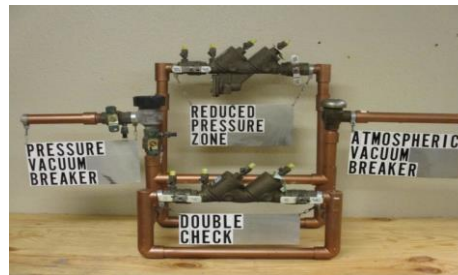


Air gap – a physical separation between potable water pipes and non-potable water sources



Double check valve assembly (DCVA) – When backflow occurs, spring loaded check valves close to create a seal and stop the water from flowing backwards.

Reduced pressure principal backflow assembly – Spring loaded valves open when backflow is present allowing contaminated water to drain out harmlessly.



## How you can help prevent cross-connections and backflow

---

- Identify any potential cross connection sources you may have.
- Install appropriate backflow preventor assemblies as necessary and have them inspected by a licensed plumber to ensure proper function.
- Reach out to Bethany Beach Water Department with any questions or concerns.